



PHARMA DEVILS

QUALITY ASSURANCE DEPARTMENT

STANDARD OPERATING PROCEDURE FOR HMI OF WALKIN STABILITY CHAMBER

STANDARD OPERATING PROCEDURE FOR HMI OF WALK IN STABILITY CHAMBER



STANDARD OPERATING PROCEDURE FOR HMI OF WALKIN STABILITY CHAMBER

DISPLAY DEVICE OF SYSTEM:

Objective: To verify that operation of system components and devices of chamber is as per specified in the design documents specification.



Remarks: _____

Meet the Acceptance Criteria [] Yes [] No

Tested by : _____ **Date :** _____

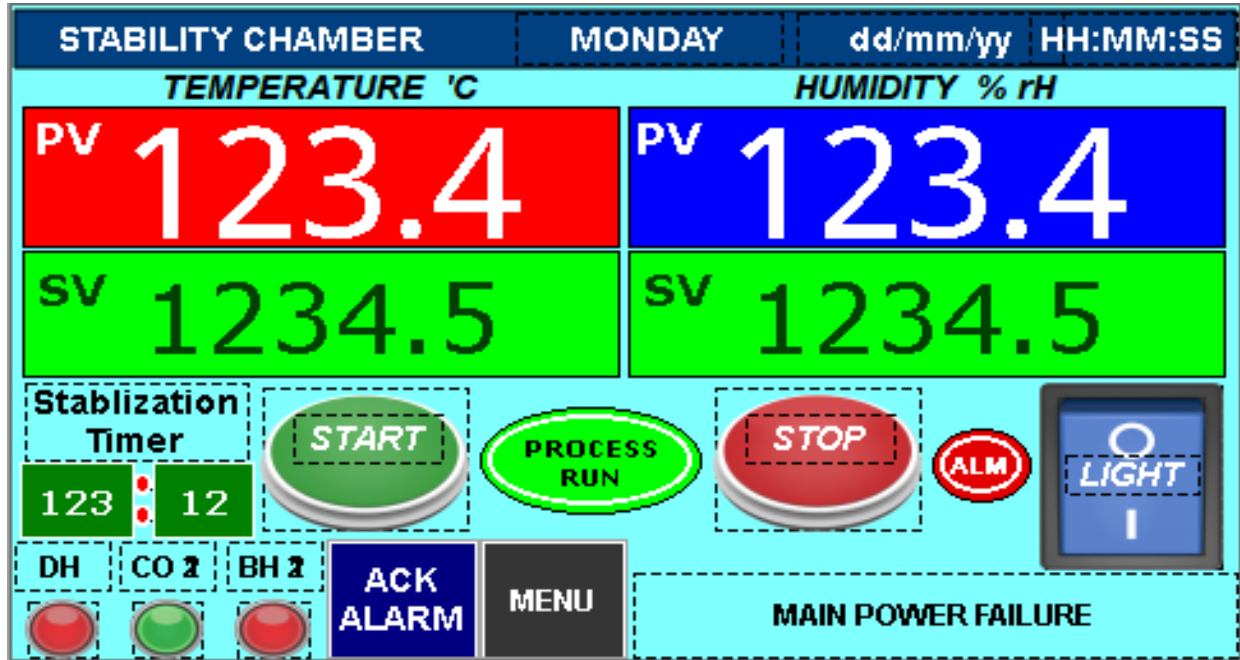
Verified by : _____ **Date :** _____



STANDARD OPERATING PROCEDURE FOR HMI OF WALKIN STABILITY CHAMBER

VERIFICATION OF OPERATION OF DISPLAY DEVICE OF SYSTEM:

Objective: To verify that operation of display device of chamber is as per specified in the design documents and functional specification.



Remarks: _____

Meet the Acceptance Criteria [] Yes [] No

Tested by : _____ Date : _____

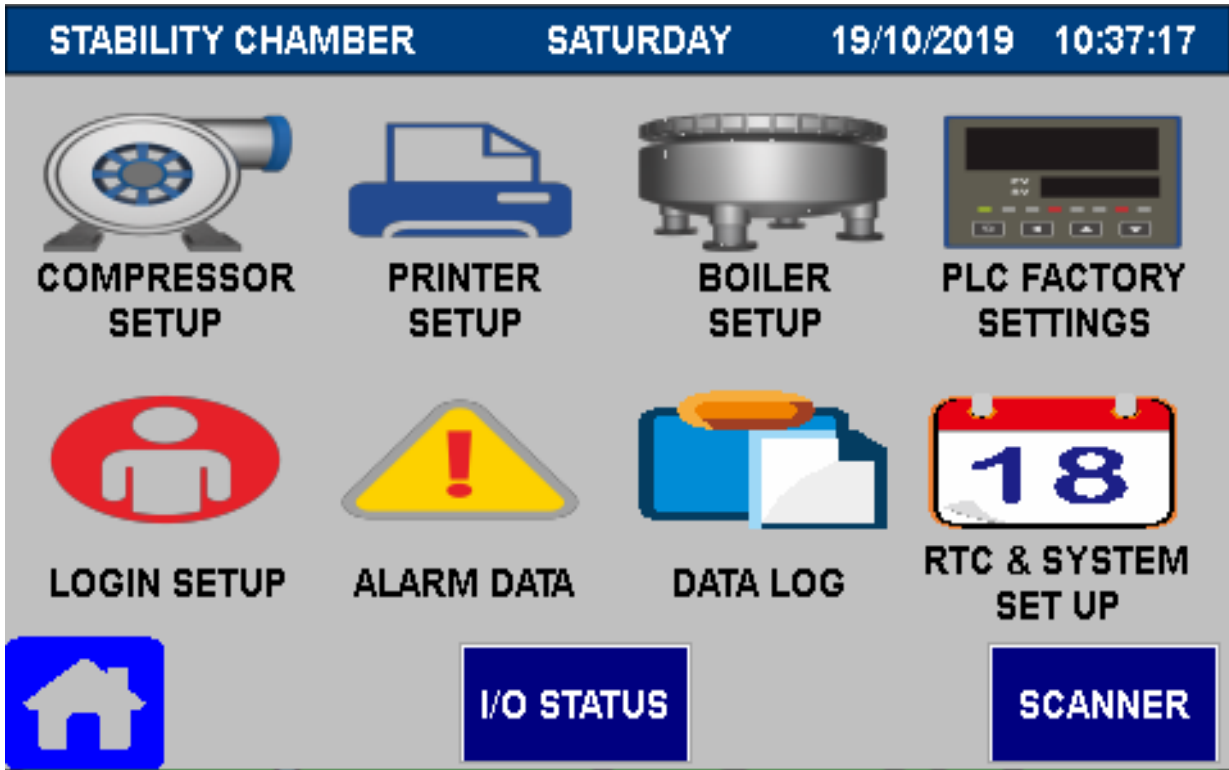
Verified by : _____ Date : _____



STANDARD OPERATING PROCEDURE FOR HMI OF WALKIN STABILITY CHAMBER

VERIFICATION OF OPERATION OF SCREEN SETTING OF SYSTEM:

Objective: To verify that operation of screen setting of chamber is as per specified in the design documents and functional specification.



Remarks: _____

Meet the Acceptance Criteria [] Yes [] No

Tested by : _____ Date : _____

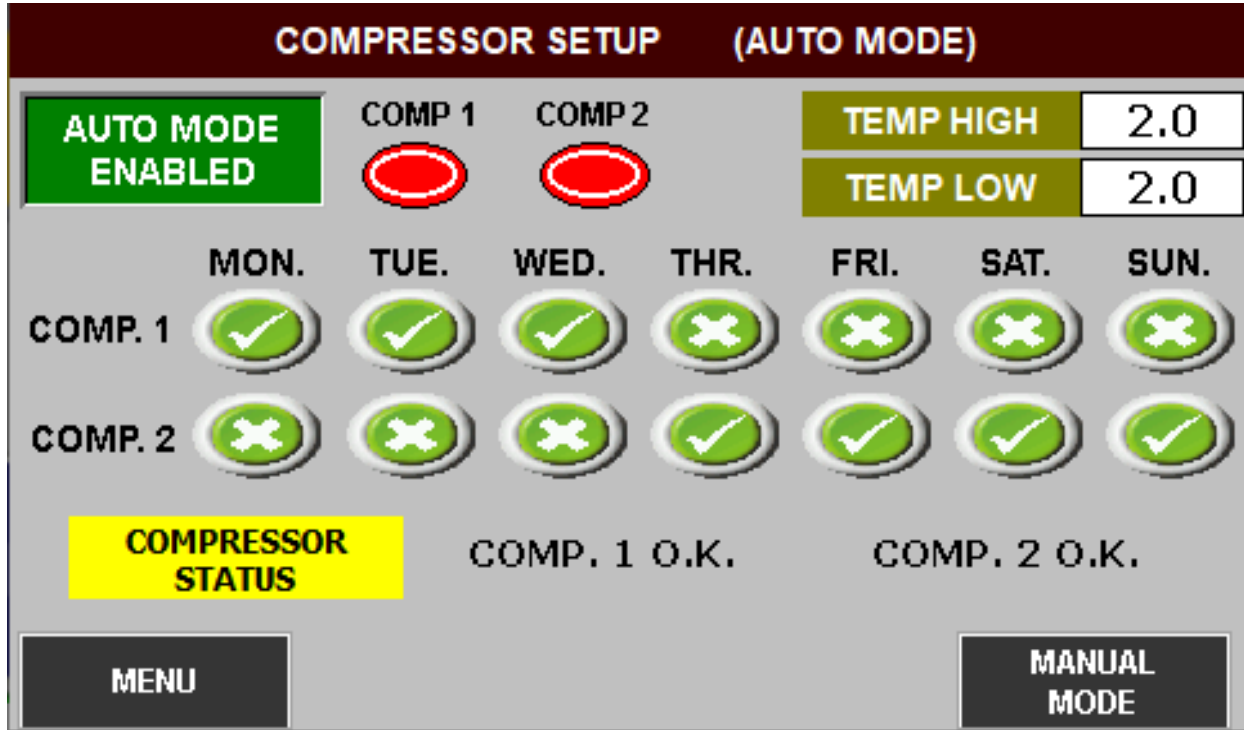
Verified by : _____ Date : _____



STANDARD OPERATING PROCEDURE FOR HMI OF WALKIN STABILITY CHAMBER

VERIFICATION OF OPERATION OF COMPRESSOR CHANGE OVER OF SYSTEM:

Objective: To verify that operation of Compressor Change Over System of chamber is as per specified in the design documents and functional specification.



Remarks: _____

Meet the Acceptance Criteria [] Yes [] No

Tested by : _____ Date : _____

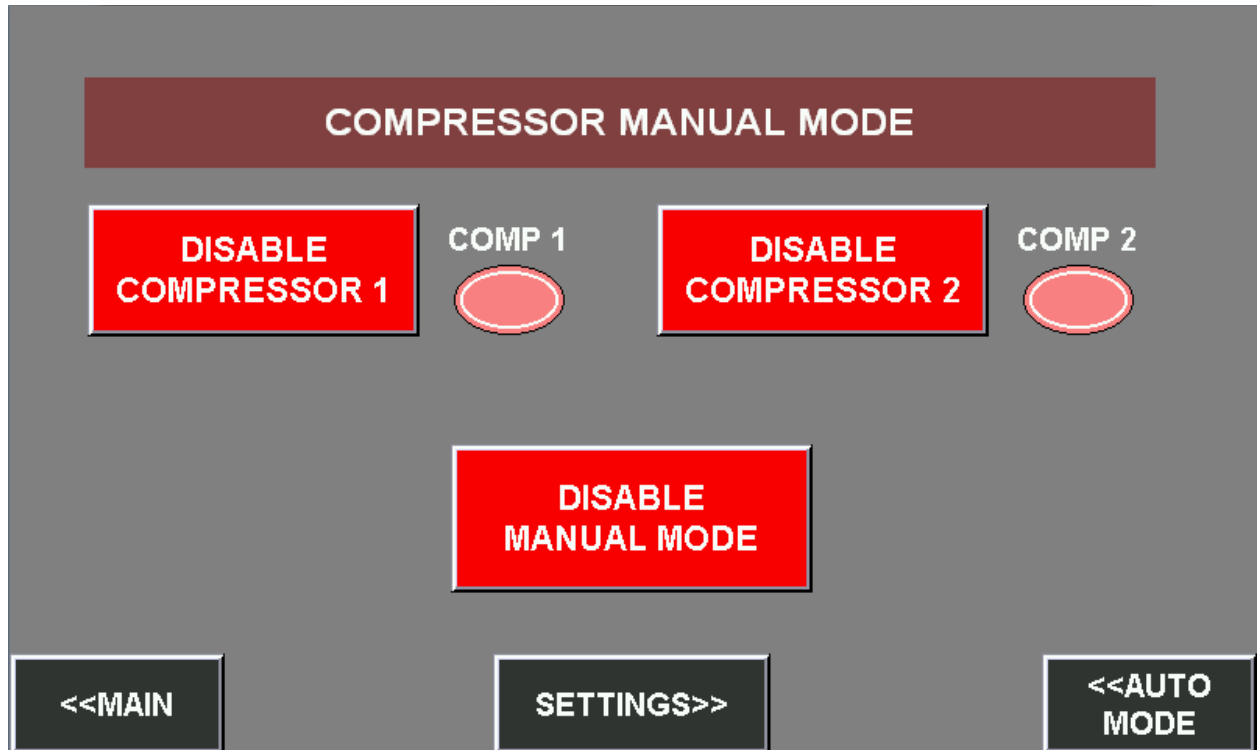
Verified by : _____ Date : _____



STANDARD OPERATING PROCEDURE FOR HMI OF WALKIN STABILITY CHAMBER

VERIFICATION OF OPERATION OF COMPRESSOR REPAIR & MANUAL MODE SYSTEM:

Objective: To verify that operation of Compressor Repair & Manual Mode System of chamber is as per specified in the design documents and functional specification.



Remarks: _____

Meet the Acceptance Criteria [] Yes [] No

Tested by : _____ Date : _____

Verified by : _____ Date : _____



STANDARD OPERATING PROCEDURE FOR HMI OF WALKIN STABILITY CHAMBER

VERIFICATION OF OPERATION OF BOILER HEATER CHANGE OVER SYSTEM:

Objective: To verify that operation of Boiler Heater Change Over System of chamber is as per specified in the design documents and functional specification.

BOILER SETUP (AUTO MODE)

AUTO MODE ENABLED

HEATER 1 **HEATER 2**

HUMI.HIGH 5.0

HUMI. LOW 5.0

HEATER STATUS **HEATER 1 OK** **HEATER 2 OK**

BACK **MANUAL MODE**

Remarks: _____

Meet the Acceptance Criteria [] Yes [] No

Tested by : _____ Date : _____

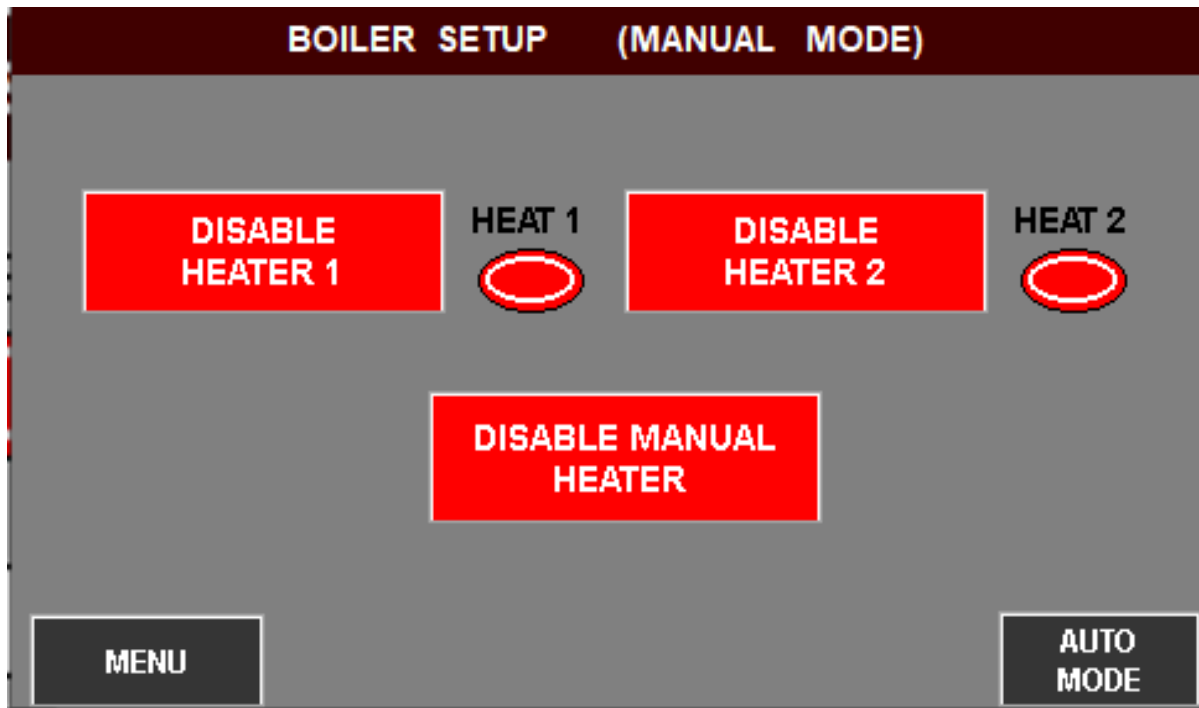
Verified by : _____ Date : _____



STANDARD OPERATING PROCEDURE FOR HMI OF WALKIN STABILITY CHAMBER

VERIFICATION OF OPERATION OF BOILER HEAT MANUAL MODE OF CHAMBER SYSTEM:

Objective: To verify that operation of Boiler Heat Manual Mode of chamber is as per specified in the design documents and functional specification.



Remarks: _____

Meet the Acceptance Criteria [] Yes [] No

Tested by : _____ **Date :** _____

Verified by : _____ **Date :** _____



STANDARD OPERATING PROCEDURE FOR HMI OF WALKIN STABILITY CHAMBER

VERIFICATION OF OPERATION OF SYSTEM STATUS O/P OF CHAMBER SYSTEM:

Objective: To verify that operation of System Status O/P of chamber is as per specified in the design documents and functional specification.

Machine Inputs Status			
TEMPERATURE THERMO STATE	OK	DOOR	OPEN MAIN SUPPLY OFF
REGULAR BOILER THERMO STATE	OK	REGULAR BOILER WATER LEVEL	LOW
STANDBY BOILER THERMO STATE	OK	STANDBY BOILER WATER LEVEL	LOW
Machine Outputs Status			
REGULAR COMPRESSOR	OFF	REGULAR BOILER	OFF AIR HEATER OFF
STANDBY COMPRESSOR	OFF	STANDBY BOILER	OFF BLOWER OFF
LIGHT	OFF	BUZZER	OFF BACK

Remarks: _____

Meet the Acceptance Criteria [] Yes [] No

Tested by : _____ Date : _____

Verified by : _____ Date : _____



STANDARD OPERATING PROCEDURE FOR HMI OF WALKIN STABILITY CHAMBER

VERIFICATION OF OPERATION OF BOILER HEATER CONTROLLER SETTING SYSTEM:

Objective: To verify that operation of Boiler Heater Setting System of chamber is as per specified in the design documents and functional specification.

BOILER HEATER CONTROLLER SETTINGS			
Sensor Type	0V-5V	Temperature Unit	% rH
Control Method	PID	Auto Tuning	OFF
Outputs 1	Heat	Outputs 2	Alarm
Upper Limit	150.0	Lower Limit	0.0
Proportional Band	47.6	Integral Time	260
Derivative Time	41	Humidity Offset	0.0
		Control Cycle	0
<input type="button" value="BACK"/>			

Remarks: _____

Meet the Acceptance Criteria [] Yes [] No

Tested by : _____ Date : _____

Verified by : _____ Date : _____



STANDARD OPERATING PROCEDURE FOR HMI OF WALKIN STABILITY CHAMBER

VERIFICATION OF OPERATION OF AIR HEATER CONTROLLER SETTING SYSTEM:

Objective: To verify that operation of Air Heater Controller Setting System of chamber is as per specified in the design documents and functional specification.

AIR HEATER CONTROLLER SETTINGS			
Sensor Type	Pt100	Temperature Unit	Fahrenheit
Control Method	PID	Auto Tuning	OFF
Outputs 1	Heat	Outputs 2	Alarm
Upper Limit	60.0	Lower Limit	0.0
Proportional Band	47.6	Integral Time	260
Derivative Time	41	Temperature Offset	0.0
		Control Cycle	4
BACK			

Remarks: _____

Meet the Acceptance Criteria [] Yes [] No

Tested by : _____ Date : _____

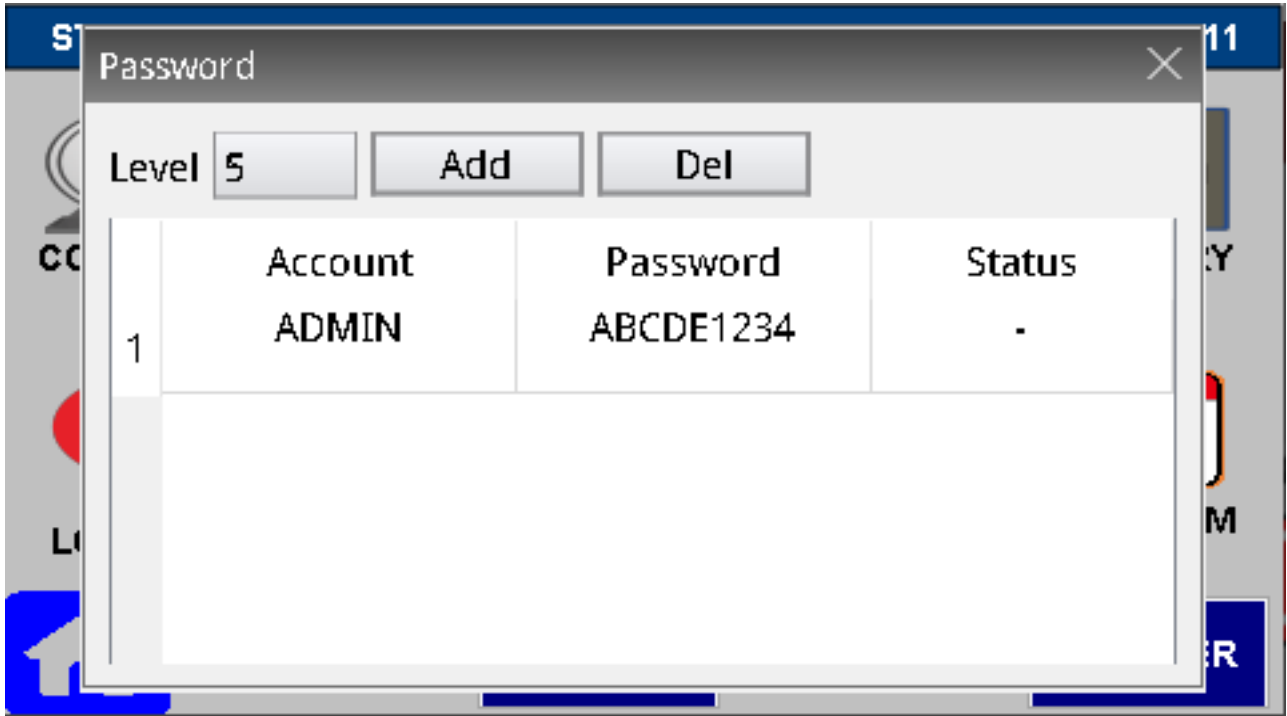
Verified by : _____ Date : _____



STANDARD OPERATING PROCEDURE FOR HMI OF WALKIN STABILITY CHAMBER

VERIFICATION OF OPERATION OF USER LOGIN CONTROLLER SETTING SYSTEM:

Objective: To verify that operation of user login Controller Setting System of chamber is as per specified in the design documents and functional specification.



Remarks: _____

Meet the Acceptance Criteria [] Yes [] No

Tested by : _____ Date : _____

Verified by : _____ Date : _____



STANDARD OPERATING PROCEDURE FOR HMI OF WALKIN STABILITY CHAMBER

VERIFICATION OF OPERATION HISTORY OF TEMPERATURE & HUMIDITY DATA TABLE:

Objective: To verify that operation history of temperature & humidity data table as per specified in the design documents and functional specification.

HISTORY TEMP. & HUMID. DATA TABLE						
No.	TIME	DATE	S.V. Temp.	T CH-1	T CH-2	T

MENU**CLEAR DATA****INTERVAL (Minute)****5****TRANSFER TO USB**

Remarks: _____

Meet the Acceptance Criteria [] Yes [] No

Tested by : _____ Date : _____

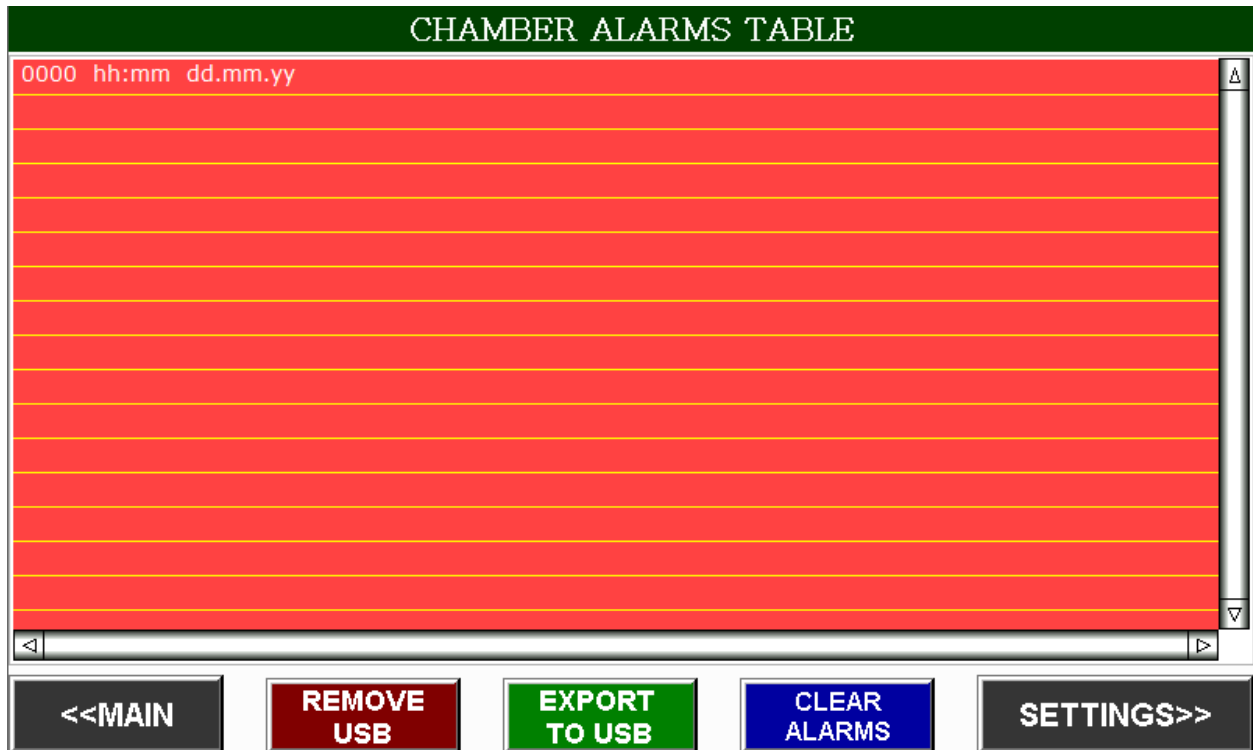
Verified by : _____ Date : _____



STANDARD OPERATING PROCEDURE FOR HMI OF WALKIN STABILITY CHAMBER

VERIFICATION OF OPERATION OF CHAMBER ALARM TABLE SETTING:

Objective: To verify that operation of chamber alarm table Setting System of chamber is as per specified in the design documents and functional specification.



Remarks: _____

Meet the Acceptance Criteria [] Yes [] No

Tested by : _____ Date : _____

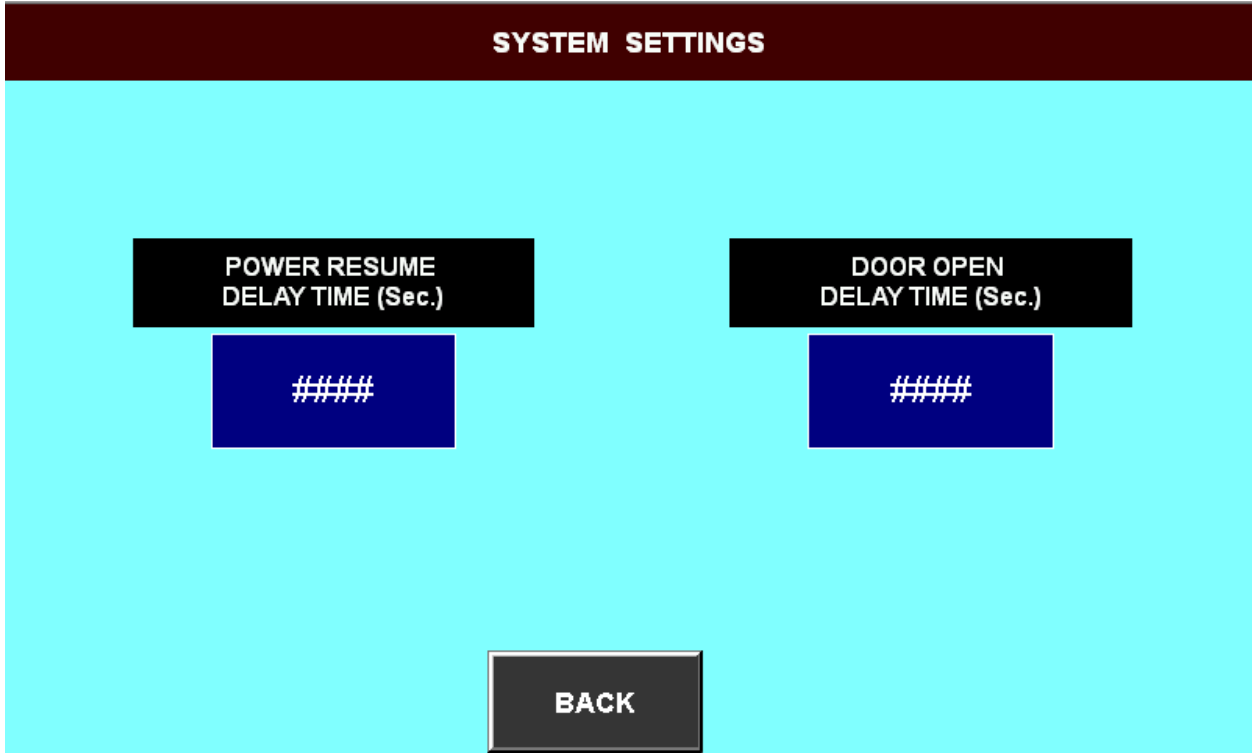
Verified by : _____ Date : _____



STANDARD OPERATING PROCEDURE FOR HMI OF WALKIN STABILITY CHAMBER

VERIFICATION OF OPERATION OF SYSTEM SETTING:

Objective: To verify that operation of System Setting of chamber is as per specified in the design documents and functional specification.



Remarks: _____

Meet the Acceptance Criteria [] Yes [] No

Tested by : _____ Date : _____

Verified by : _____ Date : _____



STANDARD OPERATING PROCEDURE FOR HMI OF WALKIN STABILITY CHAMBER

VERIFICATION OF OPERATION OF CHAMBER PRINTER SETTING IN SYSTEM:

Objective: To verify that operation of chamber printer Setting System of chamber is as per specified in the design documents and functional specification.

PRINTER SETTINGS

From Data No. To Data No. Header Line 1 Equipment ID. No.

Company Name Equipment Make

Equipment Name Header Line 2

BACK PRESS TO START ONLINE PRINTING PRESS TO PRINT STORED DATA

Remarks: _____

Meet the Acceptance Criteria [] Yes [] No

Tested by : _____ Date : _____

Verified by : _____ Date : _____